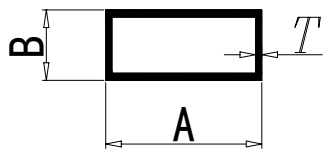


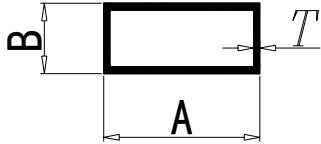
rectangular pipe



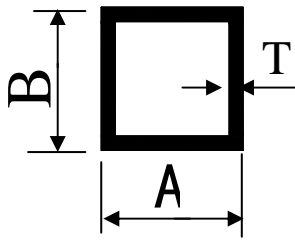
item	DWG No.	A(mm)*B(mm)	T(mm)	(kg/m)
1	G10025-0.9	100x25	0.9	0.540
2	G10025-1.0	100x25	1	0.764
3	G10025-1.2	100x25	1.2	0.764
4	G10025-1.4	100x25	1.4	0.900
5	G10025-2.0	100x25	2	0.000
6	G10044-0.9	100x44	0.9	0.000
7	G10044-1.0	100x44	1	0.000
8	G10044-1.2	100x44	1.2	0.000
9	G10044-1.4	100x44	1.4	1.110
10	G10044-2	100x44	2	1.530
11	BG10050	100x50	1.9	0.000
12	RT2040125	101.6x50.8	3.15	2.470
13	MQ11001	110X65	2.9	2.850
14	BG14025-1.35	140x25	1.35	0.000
15	BG14025-0.9	140x25	0.9	0.000
16	AGIR062-0.45	15.88X6.6	0.45	0.000
17	AGIR062-0.65	15.88X6.6	0.65	0.063
18	AGIR062-0.4	15.88X6.6	0.4	0.060
19	AA4750	150x50	2.9	3.000
20	AGI7175	152.4x50.8	2.85	0.000
21	AGI5056	16.766X7.616	0.42	0.055
22	BG0918	18X9	0.7	0.094
23	FLY-013	20x5	0.6	0.000
24	BG3510	35X10	0.95	0.000
25	BG1335	35x13	0.9	0.000
26	LD022-1.4	35X25	1.4	0.450
27	RT1562	38.1X15.88	1.4	0.400
28	RT156265	38.1X15.88	1.55	0.000
29	RT1575	38.1X19.05	3	0.000
30	G3825-0.8	38x25	0.8	0.260
31	G3825-1.0	38x25	1	0.000
32	G3825-1.2	38x25	1.2	0.386
33	BG4020	40x20	1	0.000
34	ATD04	41.96x10.16	0.55	0.000
35	AGI8017	42.86X39.67	1.5	0.000
36	AGI7110	50.8X25.4	2.2	0.000
37	RT1020125	50.8X25.4	3	0.000
38	G5025-0.7	50x25	0.7	0.000
39	G5025-0.8	50x25	0.8	0.000

40	G5025-0.9	50x25	0.9	0.000
41	G5025-1.0	50x25	1	0.430
42	G5025-1.2	50x25	1.2	0.530
43	RT1525	63.5X38.1	3	1.570
44	G7022-0.8	70x22	0.8	0.000
45	MT7200-0.9	72X25	0.9	0.000
46	RH4404-20	76.2X25.4	1.9	1.800
47	AGI2034	76.2x38.1	1	0.000
48	RT2020125	76.2X50.8	3.05	0.000
49	JY8200-0.85	76X22	0.85	0.000
50	G7625-0.53	76x25	0.53	0.000
51	G7625-0.8	76x25	0.8	0.000
52	G7625-0.9	76x25	0.9	0.480
53	G7625-1.0	76x25	1	0.560
54	G7625-1.2	76x25	1.2	0.640
55	G7625-6.02	76x25	6.02	0.620
56	MT8800	76X25	0.8	0.000
57	G7644-0.8	76x44	0.8	0.460
58	G7644-1.0	76x44	1	0.580
59	G7644-1.1	76x44	1.1	0.740
60	G7644-1.2	76x44	1.2	0.760
61	G7644-1.3	76x44	1.3	0.000
62	G7644-1.9	76x44	1.9	0.000
63	80X25	80x25	0.92	0.000
64	BG8025-0.85	80x25	0.85	0.000
65	BG8025-1.0	80x25	1	0.540
66	BG8044-1.3	80x44	1.3	0.000
67	BG8044-0.9	80x44	0.9	0.000
68	BG8044-0.8	80x44	0.8	0.000
69	BG8044-1.95	80x44	1.95	1.300
70	BG8044-1.21	80x44	1.21	0.780
71	BG8044-1.15	80x44	1.15	0.780
72	BG8044-1.0	80x44	1	0.000
73	BG8044-1.45	80x44	1.45	0.000
74	K2586-0.9	86X25	0.9	0.000
75	K2586-1.15	86X25	1.15	0.000
76	MT9800-0.8	87.5X20	0.8	0.000
77	MT9800-0.9	87.5X20	0.9	0.000
78	MT9800-1.14	87.5X20	1.14	0.000
79	MT8700	87X20	0.9	0.000
80	G9025	90x25	1	0.570
81	G9025-1.2	90x25	1.2	0.000
82	G9025-1.3	90x25	1.3	0.000

83	MQ1001	92X60	3.05	0.000
84	BG3717	95x43	2.13	0.930
85	96023	96x23	0.95	0.000



rectangular tube					
item	DWG No	A(mm)	B(mm)	T(mm)	(kg/m)
1	AGI5056	15.75	6.6	0.51	0.064
2	AGI5056A	15.75	6.6	0.64	0.081
3	AGIR062	17.02	7.62	0.508	0.067
4	AGI5089	19.3	5.8	0.4	0.053
5	FL033	25.4	12.7	1	0.194
6	LD022	38	25	1.5	0.474
7	FL026	38	25	0.6	0.2
8	AGI-M098	50.8	25.4	1.448	0.562
9	AGI-TX015	50.8	25.4	3.18	1.202
10	AGI4168	50.8	38.1	2.03	0.928
11	AGI9022	76.2	44.45	1.57	1.01
12	AGI4127	76.2	50.8	3.073	2.013
13	XY2002-18	76.2	50.8	3.175	1.397
14	FL030	76.2	25.4	1	0.535
15	AGI-M017	82.04	15.24	2.29	1.153
16	AGI-TX016	101.6	50.8	3.18	2.513
17	FL007	101.6	25.4	1.1	0.718
18	AGI-TX017	152.4	50.8	3.18	3.387
19	AGI-TX017A	152.4	50.8	3	3.2
20	AGI4176	152.4	101.6	3.81	5.078
21	AGI-TX018	203.2	50.8	3.18	4.262
22	AGI4175	203.2	101.6	3.175	5.978



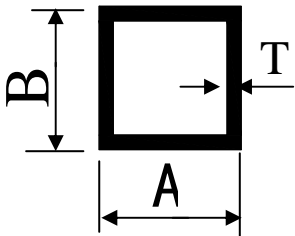
square tube

item	DWG No.	A(mm)*B(mm)	T(mm)	(kg/m)
1	G100100-1.35	100x100	1.35	0.000
2	G100100-1.95	100x100	1.95	2.100
3	G100100-4	100x100	4	0.000
4	G100100-1.85	100x100	1.85	2.132
5	EAGLE4X4STR	101.6x101.6		0.000
6	ST4018	101.6x101.6		0.000
7	FG1515	15.37x15.37	0.98	0.000
8	REL106-1.2	15.8x15.8	1.2	0.000
9	REL106-1.15	15.8x15.8	1.15	0.000
10	REL106-1.3	15.8x15.8	1.3	0.000
11	REL106-1.15	15.8x15.8	1.1	0.000
12	REL106-1.35	15.8x15.8	1.35	0.230
13	REL106-1.4	15.8x15.8	1.4	0.000
14	PG81334	16.5X16.5	1.2	0.000
15	AGI7052	19.05x19.05		0.000
16	AGI7061	19.05x19.05	0.8	0.000
17	ST7565	19.05x19.05	1.5	0.000
18	STR-0706090	19.05x19.05	2.2	0.000
19	AGI001	19.22X19.22	1.2	0.000
22	AA4029-1.1	20X20	1.1	0.000
23	AA4029-1.15	20X20	1.15	0.000
24	AA4029-1.2	20X20	1.2	0.000
25	AGI7176-0.60	25.4x25.4	0.6	0.000
26	AGI7186	25.4x25.4	3.18	0.000
27	ST1065	25.4x25.4	1.5	0.000
28	FG2525-075	25x25	0.75	0.000
29	FG2525-0.95	25x25	0.95	0.190
30	AA4052	30X30	1.3	0.620
31	REFG031	31.75x31.75	2.4	0.000
32	ST1512	38.1x38.1	3.15	0.000
33	ST1595	38.1x38.1	2.3	0.000
34	F0027	39.6x39.6	2	0.000
35	AA4095	40X40	1.95	0.840
36	AGI7041	44.45x44.45	2.2	1.010
37	AA4115	45X45	1.8	0.000
38	AA4127	50.8X50.8	1.75	0.000
39	AA4131	50.8X50.8	2	0.000
40	AA4133	50.8X50.8	1.35	0.000
41	AGI7042-1.75	50.8x50.8	1.75	0.000
42	AGI7042-2.29	50.8x50.8	2.29	1.180

43	AGI7042-2.18	50.8x50.8	2.18	0.000
44	AGI7053A	50.8x50.8	3.05	0.000
45	GY063-1.35	50.8x50.8	1.35	0.000
46	GY063-6.3	50.8x50.8	6.3	0.000
47	LD024-1.7	50.8x50.8	1.95	0.930
48	LD024-1.7	50.8x50.8	1.7	0.970
49	A7824	50X50	1.18	0.000
50	FG50501	50x50	1	0.532
51	AGI003	51.3X51.3	1.82	0.000
52	G6060	60x60	1.4	0.000
53	RP27	69.85x69.85	1.55	0.000
54	AGI2033-2.2	76.2X76.2	2.2	0.000
55	AGI2033-2.15	76.2X76.2	2.15	0.000
56	AGI2033-2.18	76.2x76.2	2.18	0.000
57	AGI2033A	76.2x76.2	3.05	0.000
58	AGI7177	76.2x76.2	1.52	1.230
59	CML003	80X80	1.35	1.187
60	G009	9x9	0.7	0.000

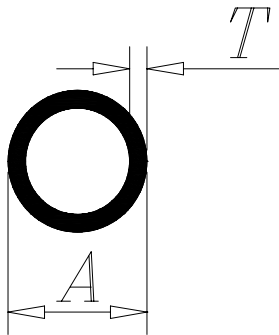
square tube

item	DWG No.	A(mm)	B(mm)	T(mm)	(kg/m)
1	FL025	12	12	0.6	0.074
2	AGI5014	12.7	12.7	1.143	0.143
3	AGI5013	14.27	14.27	1.14	0.163
4	AGIR023-5023	15.87	15.87	1.22	0.188
5	XY2002-15	15.9	15.9	1.37	0.139
6	AGI-TX007	19.05	19.05	1.57	0.298
7	AGI-TX004	25.4	25.4	1.57	0.389
8	AGI-TX005	25.4	25.4	2.29	0.555
9	AGI-TX006	25.4	25.4	3.17	0.747
10	AGI-TX009	25.4	25.4	3.18	0.765
11	AGI-TX009A	25.4	25.4	3	0.728
12	AGI5179	25.4	25.4	3.05	0.739
13	AGI5175	25.4	25.4	1.52	0.394
14	AGI-TX010	31.75	31.75	3.18	0.983
15	AGI-TX010A	31.75	31.75	3	0.934
16	FL031	31.75	31.75	0.9	0.297
17	AGI-TX011	38.1	38.1	3.18	1.202
18	AGI4102	38.1	38.1	3.175	2.185
19	AGI4102A	38.1	38.1	3	1.14
20	XY2002-16	38.1	38.1	2.1	0.55
21	AGI5180	38.1	38.1	3.05	1.158
22	AGI5176	38.1	38.1	1.52	0.604



23	FL003	38.1	38.1	1	0.401
24	AGI4103	44.45	44.45	2.362	1.078
25	FL032	44.45	44.45	1.1	0.514
26	AGI-TX012	50.8	50.8	3.17	1.639
27	AGI-TX012A	50.8	50.8	3	1.553
28	AGI5181	50.8	50.8	3.05	1.578
29	AGI5177	50.8	50.8	1.52	0.814
30	XY2002-17	63.5	63.5	2.1	0.934
31	AGI-TX013	76.2	76.2	3.18	2.513
32	AGI-TX014	76.2	76.2	6.35	4.808
33	AGI-TX037	76.2	76.2	4.78	3.657
34	AGI5182	76.2	76.2	3.05	2.417
35	AGI5178	76.2	76.2	1.52	1.233
36	AGI-TX001	101.6	101.6	3.81	4.04
37	AGI4126	101.6	101.6	6.1	6.311
38	AGI4361	101.6	101.6	3.68	3.923
39	DIA35	101.6	101.6	1.5	1.617
40	DESA017	101.6	44.45	2.29	1.182
41	DESA021	101.6	44.45	3.18	2.4
42	AGI-TX002	152.4	152.4	4.57	7.33
43	AGI4171	152.4	152.4	3.81	6.114

round tube

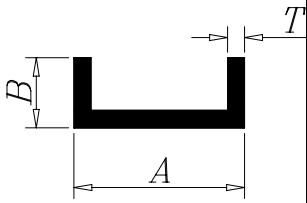


item	DWG No.	A(mm)	T(mm)	(kg/m)
1	YG019A	Ø19	0.9	0
2	RT-400120	Ø101.6	3	0
3	JF002	Ø11	0.8	0
4	PT08	Ø12	1.17	0
5	T0500X065	Ø12.7		0
6	AA3282	Ø120	2.45	0
7	YG014	Ø15.6	0.83	0
8	LD025	Ø16	1	0.14
10	LD025-1.2	Ø16	1.2	0.16
11	YG016	Ø16		0
12	AT2326	Ø17.46	1.58	0
13	G019	Ø19		0
14	YG019A	Ø19	0.95	0.4
15	CT0562	Ø20.62	3	0
16	RT-084109	Ø21.34	2.7	0
17	YG021-1.03	Ø21.6	1.03	0
18	YG021-0.95	Ø21.6	0.95	0
19	YG022	Ø22	0.95	0
20	YG025	Ø25	2.03	0
21	YG025A	Ø25	1.4	0.4
22	RT-105113	Ø26.67	0.87	0
23	FYJ017	Ø28		0
24	YG028	Ø28	1.4	0
25	YG028A	Ø28	1.7	0
26	GY067	Ø29.6	0.8	0
27	YG030	Ø30	1.45	0
28	YG030A	Ø30	1.72	0
29	YG032	Ø32		0
30	RT-132133	Ø33.4	3.4	0
31	RT-132179	Ø33.4	4.5	0
32	GW36565-3.6	Ø38.1	3.6	0
33	GW36565-3.5	Ø38.1	3.5	0
34	GW36565-3.8	Ø38.1	3.8	0
35	GW36565-1	Ø38.1	1	0
36	AG1564	Ø40	3.2	0
37	YG040D	Ø40	1	0
38	AGI7185	Ø42.16		0
39	XY009	Ø42.16	3.4	0
40	CT1518	Ø47.62	4.74	0
41	GW30983-3.5	Ø48.01	3.5	0

	42	GW30983-3.4	Ø48.01	3.4	0
	43	GW30983-3.45	Ø48.01	3.45	0
	44	GW30983-3.56	Ø48.01	3.56	0
	46	GW30983-3.52	Ø48.01	3.52	0
	47	GW30345-5.15	Ø48.26	5.15	0
	48	GW30345-5.25	Ø48.26	5.25	0
	49	GW30345-5.05	Ø48.26	5.05	0
	50	GW30345-4.59	Ø48.26	4.59	0
	51	GW30345-5.5	Ø48.26	5.5	0
	52	GW30345-4.8	Ø48.26	4.8	0
	53	RT-190145	Ø48.26	3.6	0
	54	RT-190200	Ø48.26	1.95	0
	55	XY008	Ø48.26		0
	56	YG050	Ø50	4	0
ND	57	F108	Ø50	1.1	0.458
	58	REL110-2.38	Ø52.07	2.38	0
	59	REL110-2.4	Ø52.07	2.4	0
	60	1708JM01	Ø6		0
	61	YG060-1.53	Ø60	1.53	0
	62	YG060-1.45	Ø60	1.45	0
	63	CT2018	Ø60.33	4.55	0
	64	CT2212	Ø60.33		0
	65	RT-238154	Ø60.33	2.9	0
	66	RT-238218	Ø60.33	5.5	0
	67	AA3070	Ø63.5	3.1	0
	68	RP26	Ø66.64	2.3	0
	69	RT-288203	Ø70.03	5.2	0
	70	RT-300125	Ø76.2	3.15	0
	71	RT-350120	Ø88.9	3	0
	72	RT-350216	Ø88.9	5.48	0
	73	AGI7103	Ø9		0
	74	DIA01	Ø9.55		0
ND	75	FL037	9.5	0.6	0.046
ND	76	FL036	12.7	0.9	0.046
ND	77	DIA01	16.5	6.747	0.97
ND	78	FL035	19.1	1	0.131
ND	79	AA3032	25	1.6	0.32
ND	80	AGI4235	26.62	2.83	0.576
ND	81	AGI4189	26.67	2.87	0.581
ND	82	AGI-M102	27.69	2.54	0.58
ND	83	AGI-TX030	33.4	3.38	0.867
ND	84	AGI4183	33.4	3.36	0.863
ND	85	AGI4234	33.4	3.34	0.858

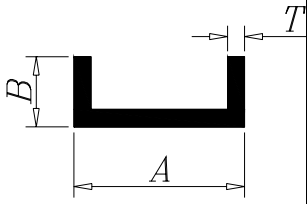
ND	86	RA006	40	1.575	0.491
ND	87	AGI-TX027	42.16	3.56	1.173
ND	88	AGI-TX020	42.164	3.56	1.169
ND	89	PW04	48.01	2.54	0.98
ND	90	AGI-TX021	48.26	3.68	1.398
ND	91	AGI4104A	48.26	3.4	1.3
ND	92	R5015	50	1.5	0.62
ND	93	AGI-M070	50.8	1.65	0.691
ND	94	PW05	53.49	3.18	1.36
ND	95	AGI-TX031	60.32	5.54	2.592
ND	96	AGI4231	60.33	3.91	1.886
ND	97	LX75	81	3	2
ND	98	AGI-TX019	101.6	3.17	2.661
ND	99	LX110	116	3	2.9
ND	100	GH-14-1-002外	122	22	3.04

Channel

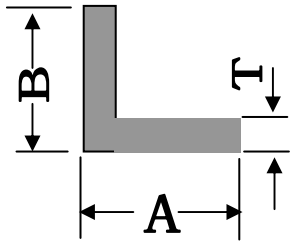


item	DWG No	A(mm)*B(mm)	T(mm)	(kg/m)
1	CH-4020150	101.6x50.8		0
2	H151-0.5	10x10	0.5	0
3	H151-0.4	10x10	0.4	0
4	H151-0.6	10x10	0.6	0.08
5	AG-A-7133	12.7x12.7	1.5	0
6	C012-0.7	12x12	0.7	0.06
7	C012-0.6	12x12	0.6	0
8	C012-0.5	12x12	0.5	0
9	AGI7101	19x19		0
10	AA2059	20.2x20	1.35	0
11	H163	25x13		0
12	C2713	27X13	0	0
13	C3109	31.75x9	2.1	0
14	REC3819	38.1x19.05	1.05	0
15	AG-200	38.1X5.08	1.2	0
16	AG-201	38.1X6.35	1.2	0
17	XY006	50.8x25.2	3	0.77
18	CH-2010X013R	50.8x25.4		0
19	H101	50X25	1.2	0
20	AGI7046	54.36x25.4	1.1	0
21	AGI7047-1.0	54.36x38.1	1	0
22	AGI7047-1.2	54.36x38.1	1.2	0
23	C8224	54.4X16.5	0	0
24	90290	57.15x38.1	1.96	0
25	AGI7044	57.15x52.45	3	0
26	AGI7043	58.75x51.15	3	0
27	KS014	59.94x64.67	3	0
28	MT8300	67.5X15	0	0
29	CH-3015130	76.2x38.1	3.1	0
30	C7612	76x12.8		0
31	C7815	78x15	0.8	0.3
32	AGI2050-1.15	79.38x38.1	1.15	0
33	AGI2050-1.35	79.38x38.1	1.35	0
34	H102	80x20	1.1	0
35	T6742	86x20	1	0
36	MT9822-0.75	87.5x15	0.75	0
37	MT9822-1.0	87.5x15	1	0.31
38	MT9822-0.9	87.5x15	0.9	0.29
39	MT8710A-0.9	87x15	0.9	0
40	MT8710A-0.75	87x15	0.75	0
41	KS035	90x55	4.75	0
42	C905	9X5	1	0

Channel profiles



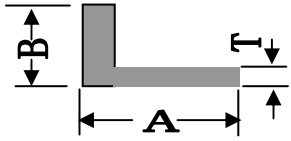
item	DWG No	A(mm)	B(mm)	T(mm)
1	FL040	9	8	0.7
5	FL038	12.7	12.7	0.8
6	AGI-AS024	15.88	15.88	1.57
9	CA12	22.35	22.35	3.3
11	EESA014	25.4	25.4	3.175
12	FL034	25.4	12.7	1
16	AGI4193	31.75	31.75	2.54
17	OSJ003B	31.75	3.18	1.27
19	XY2002-13	38.1	19.1	1.7
20	DESA015	38.1	38.1	3.175
21	OSJ003A	38.1	6.35	1.02
22	FL004	38.1	12.7	1
24	J356-8	50	24	2.3
26	DESA016	50.8	50.8	3.175
31	AGI-GM009	68.2	38	1.5
37	AGI-LMR012	80.14	38.1	1.57
38	AGI5192	80.9	25.4	1.57



Angle

item	DWG No	A(mm)*B(mm)	T(mm)	(kg/m)
1	AA1528	32x20	1.18	0.18
2	AA1577	60X30	3.95	0.91
3	AG1560	39.62x48.51	0.88	0
4	AGI2027	508x25.4	1.35	0.25
5	AGI2028-3.0	50.8x50.8	3	0.84
6	AGI2028-3.18	50.8x50.8	3.18	0.84
7	AGI2051-0.95	25.4x25.4	0.95	0.13
8	AGI2051-1.05	25.4x25.4	1.05	0
9	AGI2052-1.45	50.8x25.4	1.45	0
10	AGI2052-1.35	50.8x25.4	1.35	0
11	AGI2053	76.2x25.4	1.4	0
12	AGI2068	50.8x38.1	0	0
13	AGI2090	38.1x38.1	4.82	0
14	AGI4068-2.2	50x50	2.2	0
15	AGI4068-2.15	50x50	2.15	0
16	AGI4068-2.25	50x50	2.25	0
17	AGI7050B	76.2x50.8	6.3	2.05
18	AGI7051	76.2x50.8	3.05	0
19	AGI7051	76.2x50.8	2.93	0
20	AGI7104	76.2x38.1	0	0
21	AGI7169	50.8x25.4	3.1	0
22	AGI7170	127x25.4	1.1	0
23	AGI7171	38.1x38.1	2.2	0
24	AGI7172	44.45x44.45	3	0
25	AGI7173	50.8x50.8	6.15	0
26	ANG-150125R	38.1x38.1	0	0
27	ANG-200188R	50.8x50.8	4.78	0
28	ANG-200250R	50.8x50.8	6.32	0
29	ANG-300188R	76.2x76.2	4.75	0
30	ANG-300250R	76.2x76.2	6.35	0
31	ANG-400250R	101.6x101.6	6.2	0
32	DUR-10125	25.4x25.4	3	0.414
33	DUR-15188	38.1x38.1	4.7	0
34	DUR-20125	50.8x50.8	3.1	0
35	JL1010	10x10	0.8	0.04
36	JL1212	12x12	0.8	0
37	JL2413	24x13.25	0	0
38	JL3010	30x10	1.8	0.21
39	JL3820-3	38x20	0	0
40	JL3838	38x38	2.95	0.58
41	JL5019	50.8x19.05	2.3	0

42	RC039	19.05x19.05	0	0
43	AGI-M091	25.4X12.7	0.95	0



Angle					
item	DWG No	A(mm)	B(mm)	T(mm)	(kg/m)
1	FL016	9.6	9.6	0.8	0.039
2	AGI5165	12.7	12.7	1.52	0.098
3	FL017	12.7	12.7	0.6	0.04
4	AGI5267	19.05	19.05	1.52	0.152
5	FL010	19.05	19.05	1.78	0.174
6	FL013	19.05	19.05	0.7	0.07
7	AGI-M091	25.4	12.7	1.57	0.156
8	CA09	25.4	25.4	1.68	0.223
9	AGI4079	25.4	25.4	1.473	0.197
10	AGI5166	25.4	25.4	1.52	0.204
11	AGI5169	25.4	25.4	3.05	0.394
12	OSJ005	25.4	25.4	3	0.388
13	FL011	25.4	25.4	0.7	0.0947
14	FL012	25.4	19.05	0.8	0.094
15	FL014	25.4	25.4	1.78	0.236
16	AGI-M031	34.93	34.93	1.47	0.273
17	AGI-M063	38.1	6.35	3.18	0.355
18	CA10	38.1	44.45	3.3	0.71
19	AGI9010	38.1	38.1	3.175	0.628
20	AGI-TX032	38.1	38.1	3.18	0.631
21	AGI-TX033	38.1	38.1	4.78	0.928
22	AGI5167	38.1	38.1	1.52	0.308
23	AGI5170	38.1	38.1	3.05	0.604
24	AGI3029	38.1	38.1	2.362	0.479
25	FL009	38.1	38.1	2	0.401
26	AGI4080	50.4	50.4	2.997	0.801
27	AGI-TX024	50.8	50.8	3.175	0.846
28	AGI4068	50.8	50.8	2.362	0.635
29	AGI5183	50.8	25.4	3.05	0.604
30	AGI5168	50.8	50.8	1.52	0.413
31	AGI5171	50.8	50.8	3.05	0.814
32	CA11	76.2	50.8	4.75	1.57
33	AGI5025	76.2	50.8	3.175	1.07
34	AGI5172	76.2	76.2	3.05	1.23
35	AGI-M113	80.9	42.88	0.86	0.55
36	AGI4170	127	50.8	3.175	1.5
37	AGI5026	127	50.8	3.175	1.5